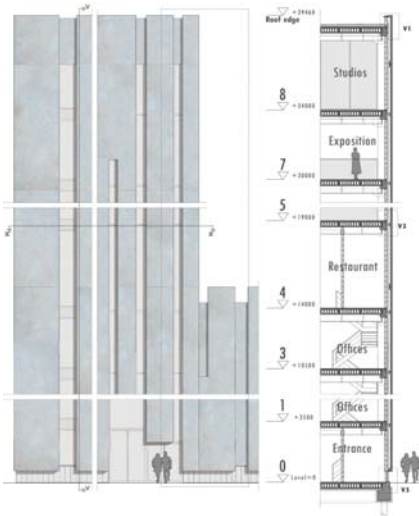


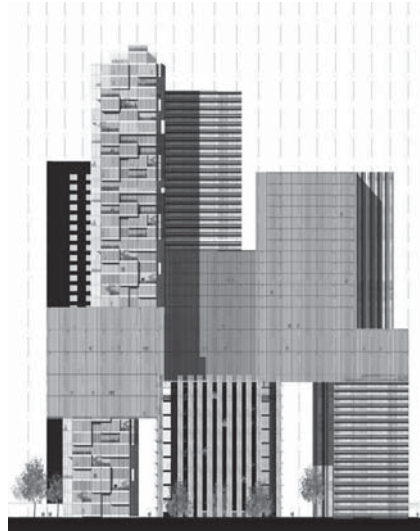


MATERIALIZATION Studio program presentations

21/4 12:30 - 13:30 BG.West.030
29/4 12:30 - 13:30 BG.West.030



Mirko Evers



Wiro Boomstra



Wenli Wan

MSc1

MADD

Materialisation and Design Development

Art depository, with the emphasis on the architectural design of the façade.

"The design ultimately finds its place through the material. It becomes irreversible and definitive. Architectural design is no graphic activity, but rather it is thinking in material and space. In what is, what can be and what must be made in between and around." (Prof. Kees Kaan).

In this MSc-1 studio of the Chair of 'Materialisation and Design Development', students will have the chance to design the new building for the collection of the Museum Boijmans van Beuningen in Rotterdam: spaces for storing, restoration, studios for artists, exposition, offices, restaurant and facilities. The building site lies on the southern wharf of the Maashaven, between the water and the Brielselaan. The total program is approx. 11.000m², but rather simple, which ensures that excessive time is not spent on organizing the program. Here, students can come reasonably quickly to a well-functioning architectonic design. The main focus, then, will be the Materialisation And Design Development of the building at a rather advanced stage of the design process; that is, at a point where the findings are integrated back into the architectural concept. Students will acquire advanced design-experience at all different levels and scales. The point is not to invent new concepts, but to learn to make architectural ideas evolve into an architectural building.

The materialization process typically takes as long as the whole architectural design-development phase, and is one of the most important tools for making architecture. Ultimately, the shape of the building, the chosen materials and their assembly determine the appearance of the building.

COURSES MSc 1

MADD Design Project	12 ects
Models and Facades	3 ects
Making Architecture	3 ects
Delft lectures on Architecture	3 ects
Delft lectures on History	3 ects
Delft lectures and seminars	6 ects

MSc3/4

TALL

Tall building design

Greater numbers of people worldwide are migrating to cities. TALL is an urgent reality, also in the Netherlands!

The development and architecture of High-rise and Tall buildings are at the center of attention in the current architectural discourse. This discourse addresses major concerns in our society; for example, the land scarcity in metropolitan areas and its high value, the need for intensifying land use in order to contribute to sustainable development, as well as the need and ambition to concentrate urban centers in order to revitalize and prepare them for the century to come.

The design project will be a TALL building in the Station area in Rotterdam. The challenge is to design 240.000m², an entire district of mixed functions, on a 16.000m² plot of land, embedded into the existing urban pattern.

We will work from an architectural point of view and focus on themes, such as tall typology and morphology, the relation between the plinth and the public space, compact and rational Tall Buildings, impacts on the city, and high-rise patterns in Rotterdam. The TALL studio is linked to the High Rise research program 'De Verheffing van Rotterdam,' carried out by our Chair. The main goal of this research program is to develop and establish a flourishing high-rise and tall-building culture based on knowledge and experience in high-rise design. We see modern urban interventions and developments in our contemporary cities increasingly driven by means of large architectural projects. Therefore, the focus for this research project will be on the juncture between urbanism and architecture.

COURSES MSc 3

TALL Design Project	6 ects
TALL Models	3 ects
TALL The Future Envelope	3 ects
Design Workshop High Rise	12 ects
Architecture and Urban Analysis	3 ects
Smart & Bioclimatic Design	3 ects

MSc3/4

SADD

Strategic Architectural Design

Development

UN Headquarters for sustainability in New York.

The graduation lab 'Strategic Architectural Design Development' teaches students to work not only on the development of their ideas and a conceptual design, but also to seek strategic design input for this design development.

In this graduation lab students will design either a Science Business Center within Technopolis (Delft) or the UN Headquarters for Sustainability in New York.

The studio will continue the urban design development of the Technopolis Masterplan resp. Manhattan Midtown, based on the results of former studios and on the actual needs. Prof. ir. K. Kaan is the supervisor of the Technopolis Masterplan development, and will thus be able to give first-hand input into the studio. In this way the design project has a strong relation to practice, and can thereby be an ideal bridge between your studies and the start of your architectural career.

For the combined graduation version A+BT (MSc3/4/5), students will conduct building technology research in their MSc4 while simultaneously continue working on the architectural design. This research will be an integrated part of the design project, intended to bring the architectural design to a higher level. The Architecture + Building Technology combined graduation lab is only offered by the Chair of 'Materialisation and Design Development.'

COURSES MSc 3

SADD Design Project	15 ects
The Future Envelope	3 ects
Smart & Bioclimate Design	3 ects
Strategic Models	3 ects
Lecture Series Research Methods	6 ects